

# 60 meter Spierings mobilkran

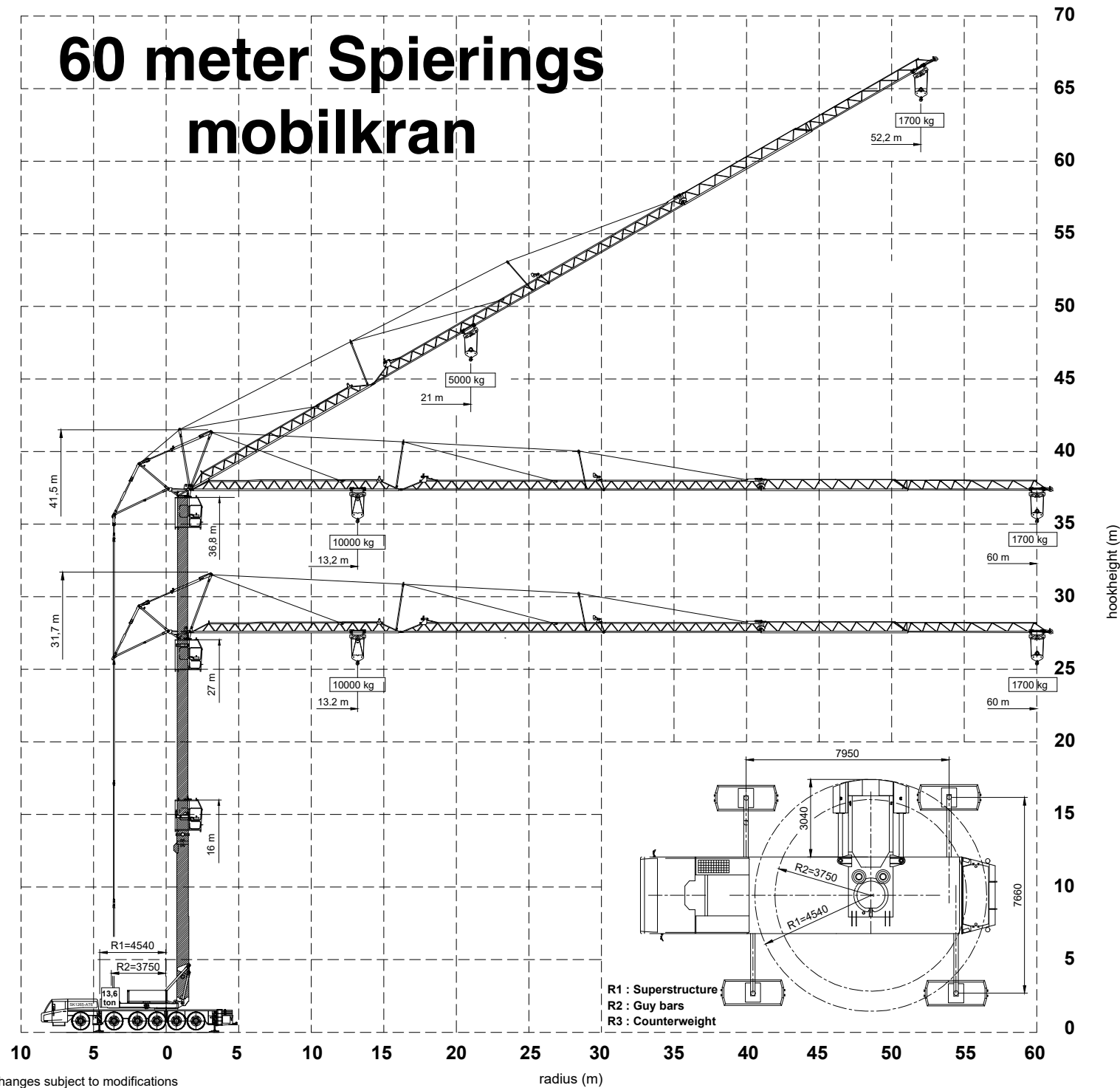
## SPIERINGS HYDRAULIC FOLDING CRANE SK1265-AT6

### Hoisting Specifications

Jib radius 60 m

### Outrigger support base

7,95 m x 7,66 m



R1 : Superstructure  
R2 : Guy bars  
R3 : Counterweight

Changes subject to modifications



Merwedestraat 15  
5347 KZ Oss NL  
Tel. +31 (0)412-626964  
Fax +31 (0)412-645299  
www.spieringscranes.com

121-00126104

# 60 meter Spierings mobilkran

Serial number

Year of construction

Crane group : A3 as per FEM 1.001  
 Loadspectrum : Q1 as per FEM 1.001  
 Classification : U4 as per FEM 1.001  
 Stability : as per FEM 1.001

Max. load

**10,0 tonne**

Max.radius  
with max. load

**13,2 m**

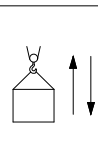
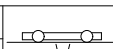
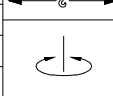
Max. capacity

**132 tm**

Max. jib length

**60 m**

**Speeds** Jib horizontal / jib 30° luffed

	m/min	kg		0 - 70 m/min
	15	10000		
	30	5000		0-0,7 r/min
	45	2500		
75	0			

All motions with hydraulic proportional controls  
 Luffing the jib 30° can be controlled from crane cab or via remote control  
 The crane should be folded in at a wind force > 8 on the Beaufort scale (wind speed 20 m/min)

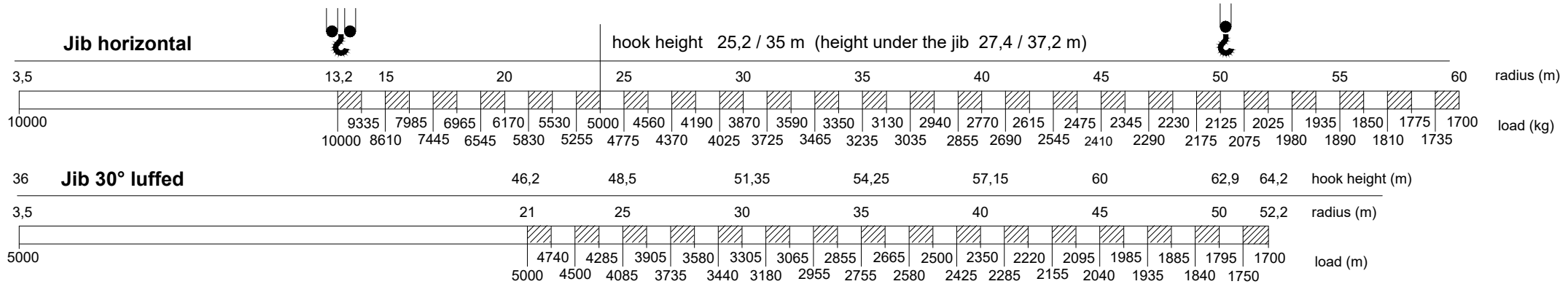
Crane equipped with full counterweight: 13600 kg  
 360° continuous slewing : with outriggers out and down  
 Operating temperature : range from -15° to 40° C.

Rated lifting capacity is net capacity  
 Max. line pull force : 2500 kg  
 2 parts of line : 5000 kg - 1700 kg  
 4 parts of line : 10000 kg - 5000 kg  
 Sail area of the load : max. 1,0 m<sup>2</sup> / tonne  
 Max. outrigger loading: 520 kN

**Outrigger position : 7,95 x 7,66 m**  
 Operation allowed up to a wind force of 7 on the Beaufort scale (wind speed 14m/sec)  
**Outrigger position : 7,95 x 5,72 m**  
 Operation allowed up to a wind force of 7 on the beaufort scale (wind speed 14 m/sec)

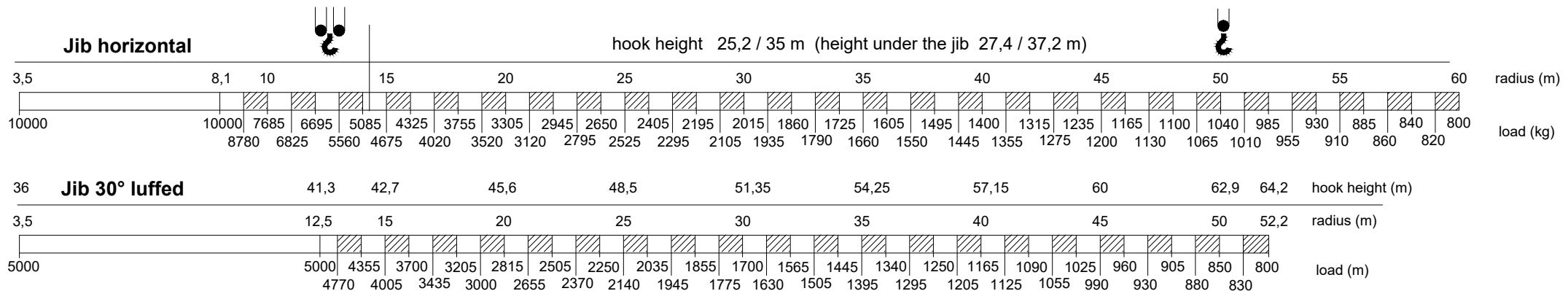
**Lifting chart**

**Outrigger spread : 7,95 m x 7,66 m**



**Lifting chart**

**Outrigger spread : 7,95 m x 5,72 m**



# Zero-emission eLift

## Full electric & hybrid mode

Zero-emission eLift-systemet har to driftstilstande; elektrisk tilstand og hybrid tilstand. Begge tilstande har en effektiv førstelinjes energikilde og giver operatøren mulighed for at vælge mellem at køre på net- eller dieselstrøm. PowerPack® batteriteknologien absorberer toppene i energiforbruget og vil blive opladet, når energibehovet til kranen er lavt. Ved at bruge den elektriske tilstand betjener du kranen 100 % emissionsfri på et lavt lydniveau uden nogen begrænsninger i brug og kapacitet.



### Zero-emission eLift contains:



PowerPack® battery technology

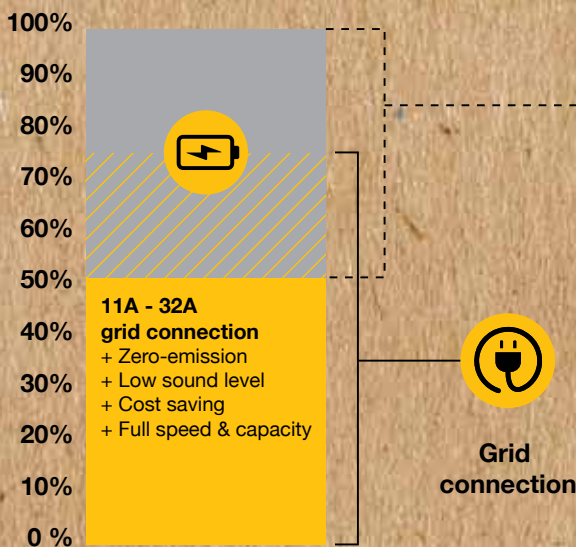


11A - 32A grid connection

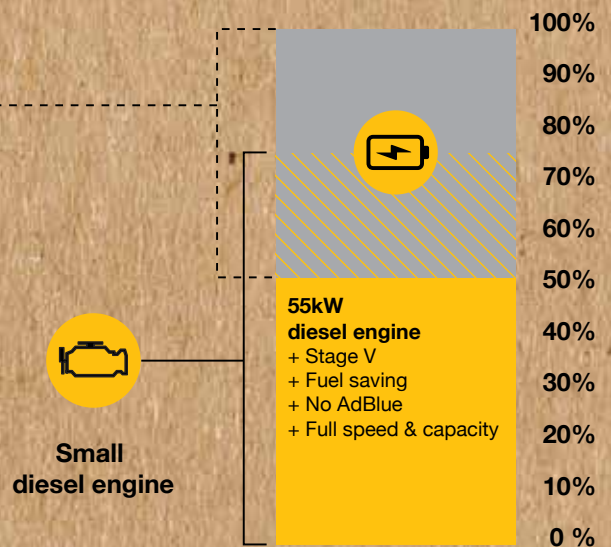


55 kW diesel engine

### ELECTRIC MODE



### HYBRID MODE



**POWER  
PACK®**

To operate the crane in electric mode it needs to be connected to a **grid connection** which is often available at most job sites. The system can be operated between 11A and 32A which can be pre-set at the display, so there still can be energy left for other equipment on site. The surplus energy of the grid connection is used to recharge the battery of the PowerPack®, so it can be used for peak absorption.

A small **55kW 3-cylinder diesel engine** with the newest Stage V emission certification is the main energy source during hybrid mode. The surplus energy of the diesel engine is used to recharge the battery of the PowerPack®, so it can be used for peak absorption.